

## **FILETutor! Network installation instructions.**

Perform the following installation logged on as a student. Do not use an administrator account unless all individuals using the software will have administrative rights to the computer.

1. If prompted to install MDAC components click OK to continue. If not skip to step 4.
2. When MDAC install has completed click ok to reboot computer.
3. When computer reboots FILETutor install will automatically start.
4. At the Welcome screen click OK (Figure 1)

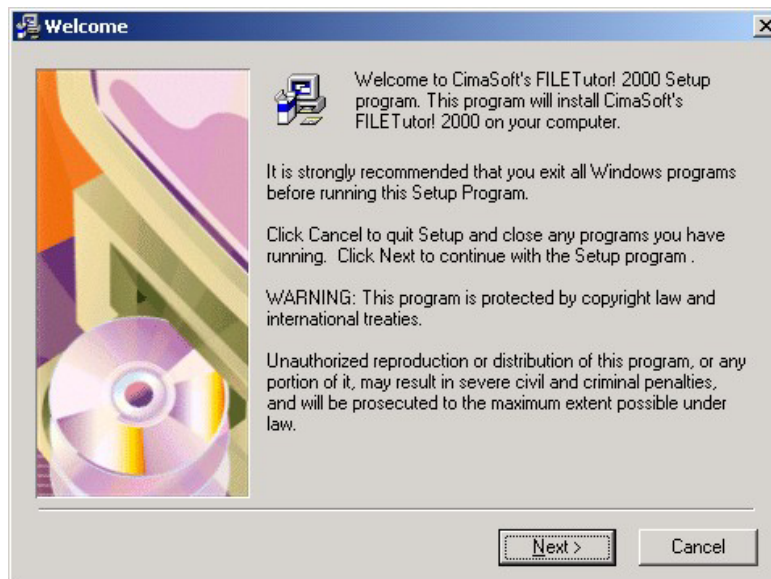


Figure 1

5. Read the End User License Agreement and click NEXT to accept. (Figure 2)

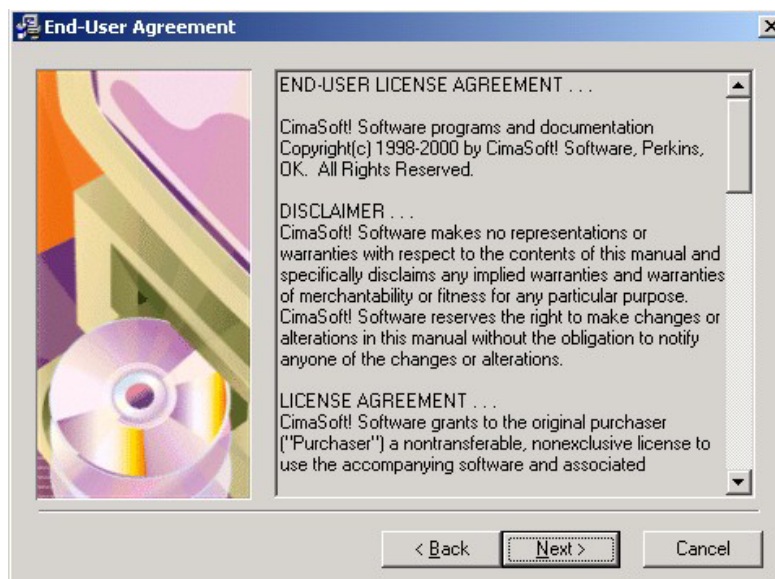


Figure 2

6. On Choose Destination Location window click on the browse button

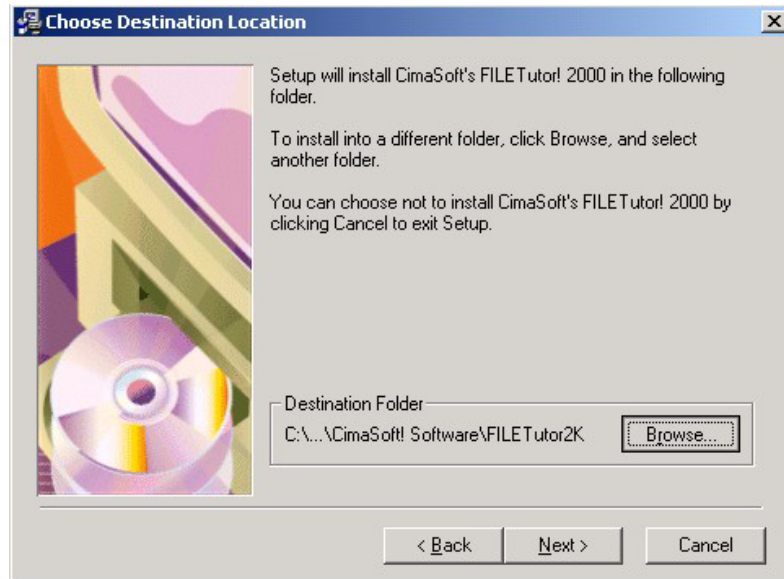


Figure 3

7. In Select Destination Directory window choose the shared location that you wish to use. In Figure 4 it is a shared network drive S:\. Then click on OK and then Next to continue.

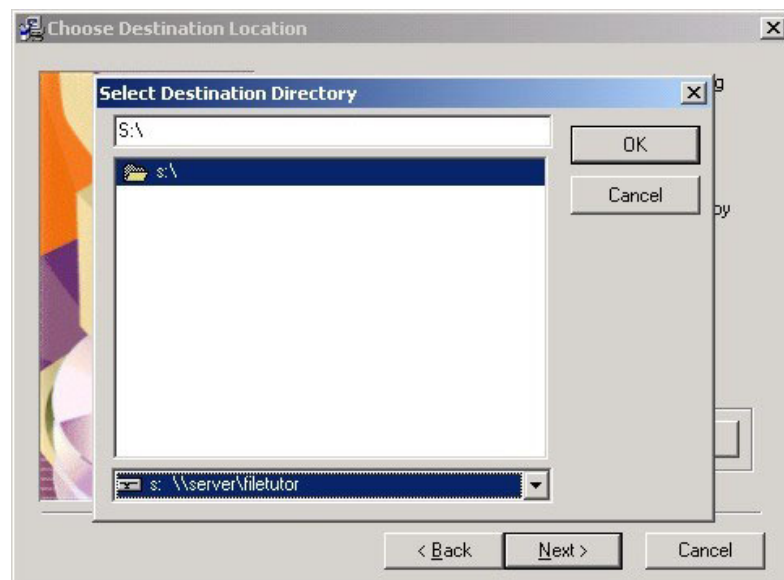


Figure 4

- On the second and subsequent installs you will be prompted with a message similar to that shown in Figure 5. Choose yes to install into that directory anyway.

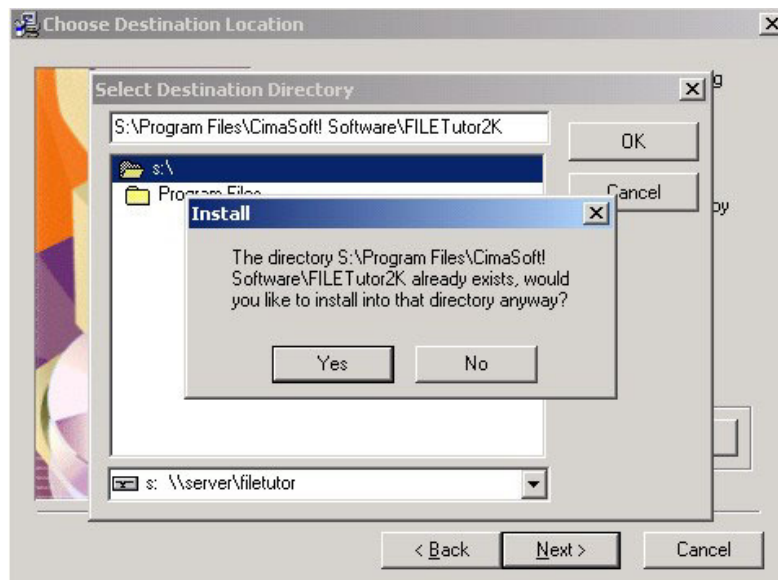


Figure 5

- On the Backup Replaced Files window verify that yes is marked and click on next to continue.

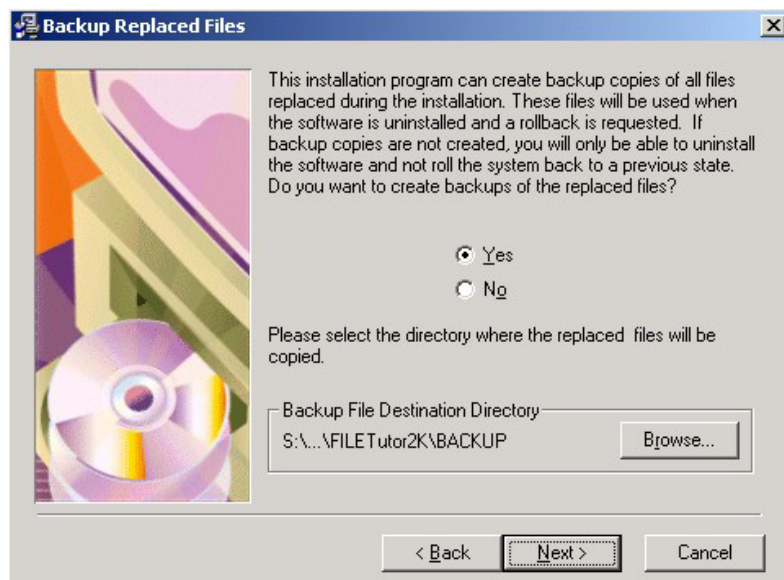


Figure 6

- On the Program Manager Group window click on NEXT to continue
- Click on next to start the installation
- When the installation completes click on Finish and you are ready to start using FILETutor!